

## GENERAL DESCRIPTION

**PRODUCT NAME:** ClickLock® Standing Seam  
**DESCRIPTION:** Aluminum Standing Seam Roofing  
**USE:** Residential and light commercial roofs and mansards.

**CANADA DISTRIBUTOR:**  
 Classic Products Roofing Systems Inc.  
 275 Watline Ave., Mississauga, ON L4Z 1P3  
**1-866-969-7663**  
 info@classicproducts.ca | www.classicproducts.ca

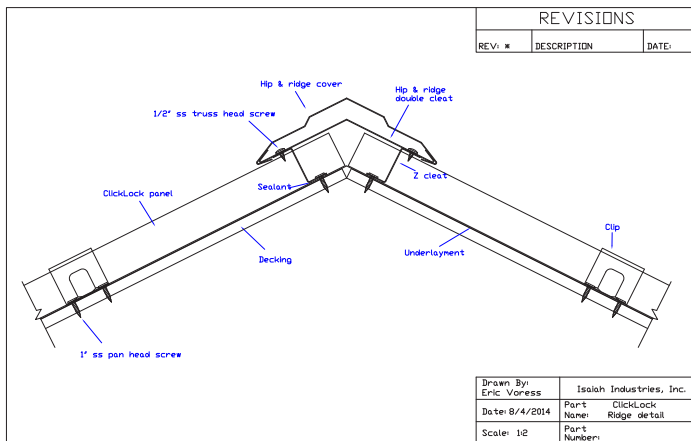
**MANUFACTURER:** Isaiah Industries Inc.

## FINISH

ClickLock® Premium Standing Seam is coated with a baked-on protective primer and Kynar 500 or Hylar 5000 top coat to provide a high quality finish.

Kynar 500 and Hylar 5000 are trade names for polyvinylidene flouride resin. Panel backs are finished with a protective clear coat.

## ClickLock® STANDING SEAM



- » Matching lashings and matching coilstock are made of .032”/.813 mm 3105 H26 aluminum alloy sheet stock with a yield strength of 26 400 psi and tensile strength of 27 700 psi.

### 2 Way Locking Panels Clip Mounted System

**Exposure Height: Up to 40’**  
**Exposure Width: 12”**  
**Thickness: .032”/.813 mm**  
**Weight/Square: 67 lbs**

- » All roll-formed panels including pre-formed accessories and flashing
- » Clip fasteners allow for lineal expansion
- » Metal Construction Association Certified Premium Roofing Panels
- » LEED Credit Eligible

## INSTALLATION

- » **Minimum Pitch 2:12**
- » Applied over minimum 3/8” clean decking
- » Entire roof must be covered with ice and water membrane
- » Male lock on one side of panel and female lock on opposite side of panel
- » Female lock snaps over male lock
- » Field-formed lip at bottom of panel locks over drip edge

**Scope:** The scope of work includes but is not limited to, the installation of all pre-formed panels, pre-formed accessories and field formed accessories such as miscellaneous flashings and attaching devices as well as sealant.

**Note on Dissimilar Materials:** Aluminum materials should not be installed in contact with dissimilar metals, or other corrosive nonmetallic materials that might be wet continually. Dissimilar materials should be painted or otherwise protected when in contact with aluminum. Do not permit water from copper flashing to drain over aluminum products.